



**Research Article**

ISSN: 2581-3218

IJDR 2020; 5(2): 71-75

Received: 11-05-2020

Accepted: 20-07-2020

© 2020, All rights reserved

www.dentistryscience.com

## Guided rescue technique for the replacement of failing implants while preserving the existing prosthetic construction – Part 1: proposed protocol with the ins and outs of the clinical challenge

Michel Abbou<sup>1</sup>, Franck Lasry<sup>2</sup>

<sup>1</sup> Founder and scientific director of SICT MIEUX Private practice in Paris 75008

<sup>2</sup> President of the Institut Français d'Implantologie Orale Private practice in Paris 75006

### Abstract

If the success rates in implantology display scores envied by many other medical and dental disciplines, the fact remains that the negative feeling is around 100% for the practitioner and for the patient in case of failure, especially when this failure occurs after prosthetic placement. The management of these situations rarely addresses the possible recovery of the prosthesis. This article proposes an original protocol making it possible to avoid having to redo the prosthesis following an implant loss and its replacement.

**Keywords:** Dental implant failure, Implant replacement, Implant prosthesis, Prosthetic failure, Failure management, Prosthetic preservation.

### INTRODUCTION

Implant failure, like any failure, generates at least a feeling of disappointment in both the patient and the treating practitioner. The frustration is even greater when the failure is accidentally observed without any warning signs when all the therapeutic phases had gone well, leading to the final prosthesis which satisfies the two protagonists (patient-practitioner). As practitioners, we are unfortunately used to dealing with these situations as best we can clinically and psychologically; we manage to accept it and integrate it into our professional routine insofar as these clinical failures represent only a low statistical rate in all of our therapeutic achievements. For the patient, it is a more difficult test since he (she) is 100% concerned by this failure!

We speak of primary implant failure when the latter is noted before the implant is clinically functional: it is a defect in osseointegration which will again lead to the removal of the concerned implant and its possible immediate or deferred replacement. The secondary failure is more pernicious and more consequent because it is noted after the prosthetic loading; in many cases it generates not only the removal of the implant but also that of the prosthesis deprived of its fundamental support.

Insofar as fixed prostheses on implants result from a "tailor-made" construction process involving the clinical, biological, anatomical and physiological parameters specific to each patient and to each site concerned, implant failure most often results in the loss of the supported prosthesis, except in the case of removable plural prostheses having been designed with more implants than necessary and which can therefore do without one or more implants in a situation of failure.

Even if the recurrence of implant failures remains relatively low within our exercise, it is our duty to manage these situations as well as possible, if only out of respect for the patients who have placed their trust in us. The surgical procedures for removing and replacing an implant in failure have been widely described and discussed [1-5].

On the other hand, the problem of the prosthesis relating to this implant has only been touched upon a little while it is part of the overall treatment in question and it contributes to its overall cost. In 2003, Glavas and Moses [7] proposed a surgical stage-indexing impression technique allowing the laboratory to make the

**\*Corresponding author:**

**Dr. Michel Abbou**

Founder and scientific director  
of SICT MIEUX Private practice  
in Paris 75008

Email:

drmichel.abbou@wanadoo.fr

final prosthesis in advance, a technique they recommend to "save time" in cases of placement of primary or secondary implant (following implant failure). In this they use an indexing technique recommended in 2001 [6] to optimize the shape of the prosthetic bed by placing a provisional prosthesis directly at surgical stage 2 (instead of the healing screw).

It is also on the basis of this indexing principle that we propose here an original implant replacement technique with preservation of the existing prosthetic structure. Even if it is not applicable in 100% of cases, the suggested procedure has the advantage of being reproducible and not operator-dependent.

### Statement of the problem

Since the implant-supported fixed prosthesis is the result of a custom-made construction, its durability in the event of implant failure can only be imagined by replacing the implant in question with an identical implant not only in terms of prosthetic connection, but also in terms of in situ positioning in the 3 directions of space. Several difficulties emerge from these specifications:

1. The most frequent implant failure consists in the loss of osseointegration, with the formation of a fibrous tissue in contact with the implant, tissue which should be carefully curetted after the removal of the implant... leading to deformation of the initial implant socket, therefore unsuitable for the primary stability of a new identical implant;
2. If implant the failure consists of a fracture of the fixture (more rare), surgical removal of the latter also most often leads to deterioration of the bone site concerned, bringing us back to the same situation as the previous point;
3. In the two aforementioned cases, we can consider a new deferred implant placement (after bone healing): the only difficulty will then be to reposition an identical implant in a situation identical to that which allowed the prosthetic construction that we wish to preserve ...
4. We can also consider the option of immediate replacement of the failed implant [1, 2], but we must then find a solution that addresses the 3 above problems:
  - Primary stability of the new implant
  - Prosthetic platform compatible with the existing prosthesis
  - Three-dimensional positioning also compatible with the existing prosthesis

### MATERIALS AND METHODS

The rescue technique described below was designed using the two features below.

#### 1. Use of large diameter implants

Commonly known as WP (Wide Platform) implants, these implants were first designed in the early 1990s, because practitioners and manufacturers sought a certain proportionality between the implant root and the prosthetic crown on the one hand, as well as the optimization of the potential osseointegration surface on the other hand. These implants were thus mainly intended for the molar areas. Large implants have also been shown to be useful for extemporaneous replacement of RP (Regular Platform) or NP (Narrow Platform) implants in failed situations, as long as the bone context allows [8, 9]. Large and short implants have appeared more recently, with studies demonstrating their reliability as alternatives to therapeutic processes using bone reconstructions when the volumes involved are considered to be classically insufficient [10-12].

In most cases, the first generation wide implants sported prosthetic connections that were also wider than the RP and NP implants... and therefore incompatible in terms of prosthetic constructions. But in recent years, several systems (including Alphabio-Tec and Cortex, as illustrations in this article) have designed implants with variable dimensions but incorporating the same universal internal hexagon connection.

In the context of the problematic of this article, such a technological opportunity allows us to consider the immediate replacement of a failed implant by an implant of larger diameter (allowing good primary stability) with the same connection, therefore compatible with that of the prosthesis involved. It only remains to solve the question of in situ repositioning in the 3 directions of space.

#### 2. Use of the Cortex Surgical Guide

Since its launch by Gerald Niznick in the early 80s (CoreVent implants), the internal hexagonal connection has consolidated its reputation and use with a large-scale study sporting eloquent statistics published in 1997 [13]. It has then acquired the status of "standard", adopted by many implant systems.

The Cortex range has a double advantage:

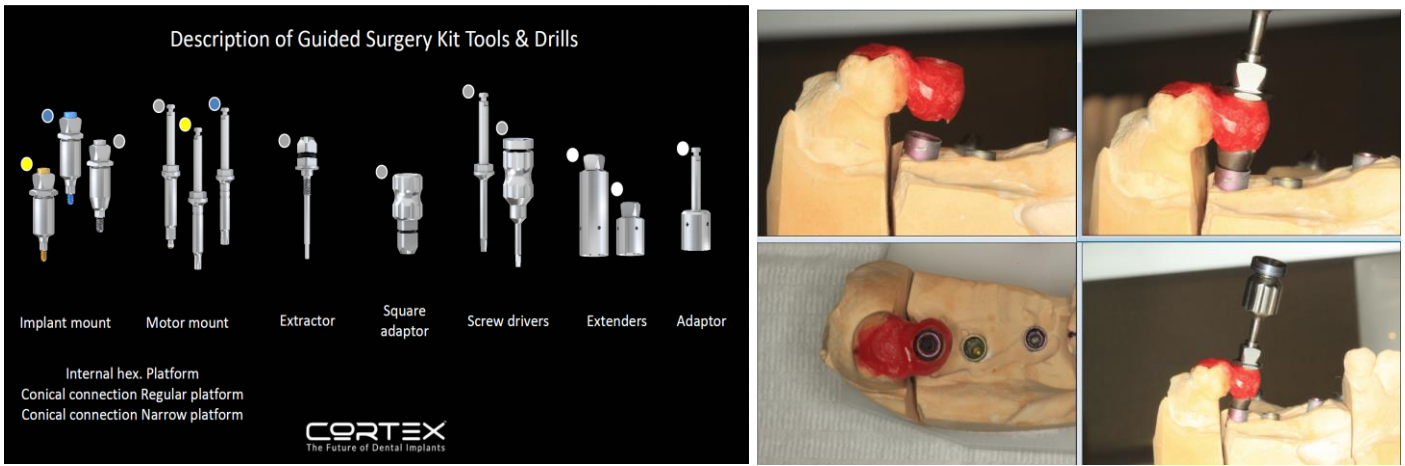
1. It offers implants of different diameters (and lengths) with 2 universal prosthetic connections of your choice (internal hexagon and conical Astra-like);
2. It has an original, very reliable guided surgery system that allows implant positions to be ideally predetermined as part as the pre-implant study.

### RESULTS

1<sup>st</sup> case: *loss of osseointegration on implant 27; the challenge is to retrieve the failed implant and carefully remove the granulation tissue that has formed, then to place an immediate implant (wider, with the same prosthetic connection) in the same spatial configuration as the initial implant .*



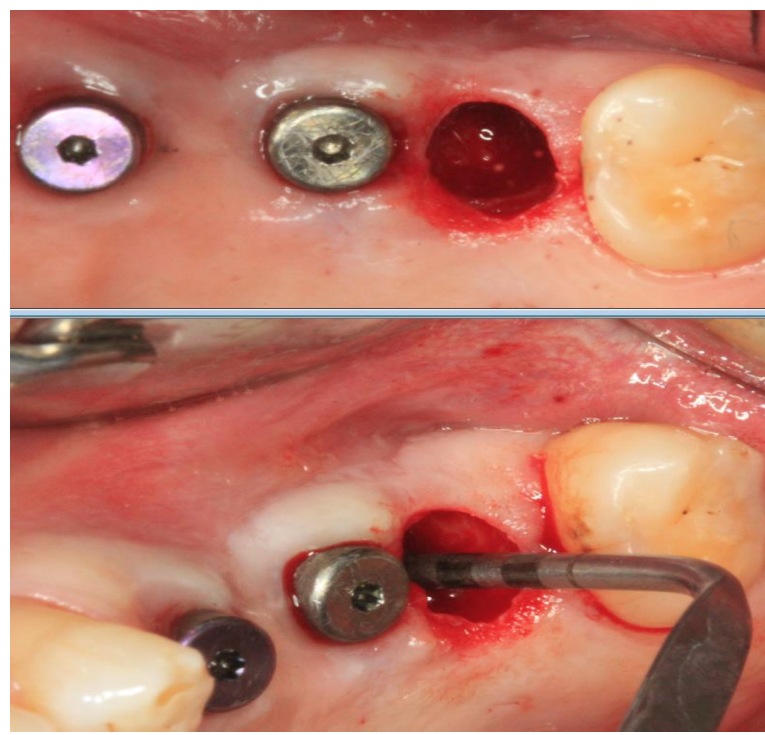
Figure 1, 2: Radiological observations



**Figure 3, 4:** Tailored preparation of the Rescue-guide (on the initial model which was used for the prosthetic work) using the Cortex Kit © (available for internal hexagonal connections type CoreVent, as well as for conical internal connections Astra-like)

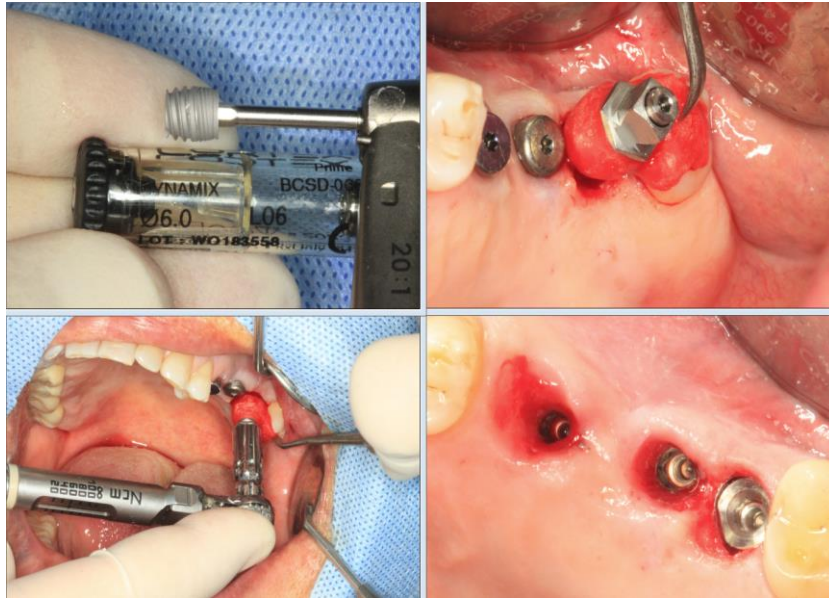


**Figure 5:** Prosthetic removal + implant removal (with Cortex hex-driver) + curettage of granulation tissue

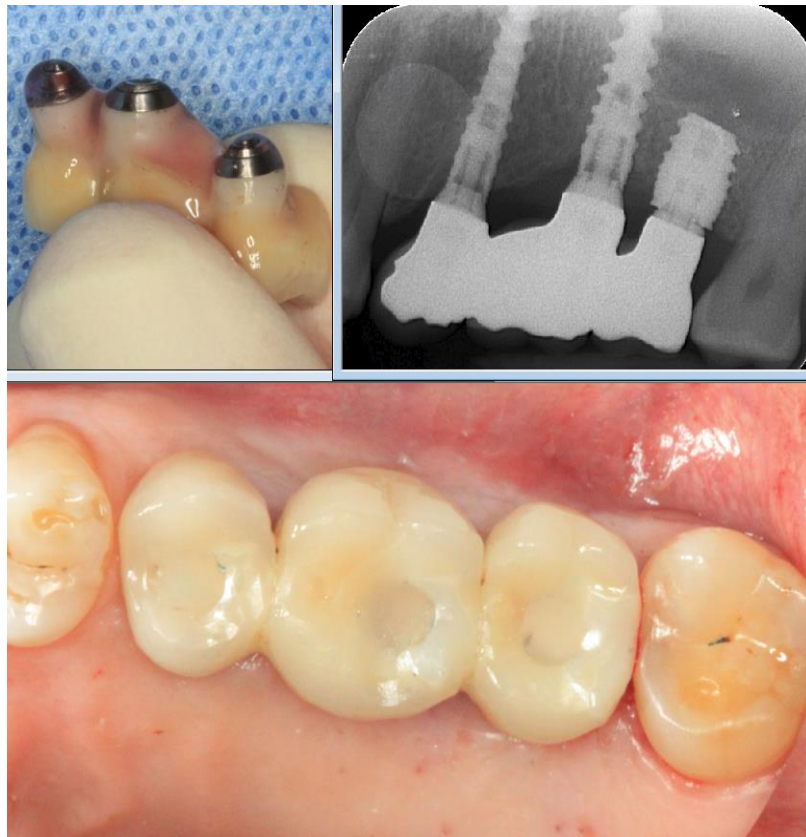


**Figure 6:** The cleaned implant socket appears with a diameter greater than the initial diameter which had allowed the insertion of the AlphaBio implant (Ice 4.2mm)





**Figure 7:** Placement of a self-tapping Cortex Dynamix® implant (internal hexagon) 6X6mm using the Surgi-Guide which allows to find the prosthetic connection identical to that of the initial implant in the 3 directions of the 'space'.



**Figure 8:** The fixed existing prosthesis is immediately replaced and the radiological control testifies to its perfect adaptation, with a prosthetic emergence type of shifting platform due to the increased diameter of the new implant

## DISCUSSION

From a purely clinical point of view, this indexing technique already proven for a long time in other circumstances [6, 7], gives us great satisfaction. Several parameters are nevertheless to be taken into consideration:

1. What about the methods of prosthetic fixation at the level of the newly replaced implant? ... Should we screw and tighten the prosthetic screw to the maximum recommended by the

manufacturer or simply screw it manually, or even not screw it there but only on the adjacent implants ?

For now, we have made the choice to screw-lock as for the other implants involved in the prosthesis; we justify this option by the following arguments:

- This maximum screwing makes it possible to reinforce the apparent the implant-prosthetic fit

- Studies have shown that the plasticity of the bone at its interface with the freshly placed implant allows the micro movements necessary for ideal repositioning within the limit of 150 µm [14], while remaining favorable to bone reorganization such as it must occur during the osteogenesis and osseointegration processes [15, 16]
  - Finally, the contained mechanical stimulation (thanks to the adjacent rigid supports) which will be generated by physiological chewing forces is likely to promote the differentiation of mesenchymal stem cells into osteoblasts inducing the reformation of bone tissue in contact with the implant [17, 18]
2. This new clinical protocol implemented with the authorization of the patients is certainly conceptually satisfactory and relatively easy to be set. We must wait for large-scale results with medium and long-term statistics to confirm its validity.
  3. The Cortex surge-guide concept already allows the production of surgical guides developed by a CAD/CAM process during the pre-implant study; insofar as we will probably have to use more and more to these guides in first intention, the protocol described in this article will be simplified by the possible re-use of the initial guide in case of failure, while only change the diameter (and length eventually) of the implant.

## CONCLUSION

The original protocol described and argued in this article allows the preservation of existing prosthetic work despite the loss of its implant support. The reuse of the prosthetic work is thus made possible in many cases if one takes care to replace the lost implant(s) by respecting the indications of this protocol. This original approach is likely to be refined technically over time and with the participation of other operators. It will also evolve in parallel with the increasing involvement of the digital flow in our surgical-prosthetic approaches. Finally, its effectiveness will also have to be measured in terms of future statistical publications.

## Financial Support

Nil.

## Conflict of Interest

The authors declare no conflict of interest.

## REFERENCES

1. Abbou M, Missika P - Reprise de traitement implantaire: A propos d'un cas de fracture d'implants en céramique. *L'Information Dentaire*, 1993 ; 19:1399-1408
2. ANITUA Eduardo, HAMDADN ALKHRAISAT Mohamed, TEJERO Ricardo - Immediate replacement of failed dental implants owing to periimplantitis. *Journal of Oral Science and Rehabilitation*, Sept 2015
3. LEVIN Liran - Dealing with dental implant failures *J Appli Oral Sci*. 2008; 16(3):171-175
4. Nguyen R, Soldatos N, Tran D, Stylianou P, Angelov N, Weltman R - Survival of Dental Implants Replacing Previously Failed Implants: A Retrospective Study in a University Setting. *Int J Oral Maxillofac Implants*, 2018; 33(6):1312-1319
5. Solderer Alex, Al-Jazrawi Adrian, Sahrman Philipp, Jung Ronald, Attin Thomas, Schmindlin Patrick R - Removal of failed dental implants revisited: Questions and answers. *Clinical and Experimental Dental Reserch*, 2019
6. Abbou M. Emergences implanto-prothétiques en zone esthétique : alternatives cliniques au stade prothétique. *Alternatives Quintess. Int*. 2001; 9:53-64
7. Glavas P, Moses Ms. Stage I indexing to replace a failed implant in an edentulous arch: a clinical report. *J Prosthet Dentistry*, June 2003; 89(6):533-535
8. Langer B, Langer L, Hermann I, Erug M. The wide fixture: a solution for special bone situations and rescue for the compromised implant. Part 1. *Int J Oral Maxillofac Implants*. 1993; 8:400-408.
9. Evian CI, Cutler SA. Direct replacement of failed CP titanium implants with larger-diameter, HA-coated Ti-6Al-4V implants: report of five cases. *Int J Oral Maxillofac Implants*. 1995; 10:736-743
10. Griffitt Tj, Cheung Ws. The use of short, wide implants in posterior areas with reduced bone height: a retrospective investigation. *J Prosthet Dentistry*, August 2004; 92 (2):139-144
11. Gentile Ma, Sung-Kiang C, Dodson Tb. Survival estimates and risk factors for failure with 6X5.7-mm implants. *Int J Oral & Maxillofac Implants*, Nov/Dec 2005; 20(6):930-937
12. Sawadogo A, Cisse B, Guinguemde P, Pesson M, Mbodj B, Djeredou B, Ella B – Implants courts vs implants standard places sur une mandibule atrophique après augmentation osseuse *L'Information Dentaire*. 2020; 8:26-33
13. Niznick G – A 40 Year History of Dental Product Innovations
14. Vauhkonen M, Peltonen J, Karaharju E, Aalto K, Alitalo I – Collagen synthesis and mineralization in the early phase of distraction bone healing. *Bone Miner* 1990; 10(3):171-181
15. Ilizarov GA, Ledyasev VI, Shitin VP. Experimental studies of bone lengthening. *Eksp Khirurgiia Anesteziol* 1969; 14(6):3
16. Tettamenti L, Andrisani C, Bassi Ma, Vinci R, Silvestre-Rangil J, Tagliabue A. Immediate loading implants: review of the critical aspects. *Oral Implantol (Rome)* 2017; 10(2):129-139
17. Thomas T, Martin A, Lafage-Proust Mh. *Physiologie du tissu osseux. EMC (Elsevier Masson SAS, Paris), Appareil locomoteur*, 2008 ; 14-002-B-10,
18. Dumas V. Réponse des ostéoblastes à des stimulations physiques basées sur des contraintes mécaniques basses amplitudes hautes fréquences. Implications en ingénierie tissulaire. *Médecine humaine et pathol. Université Jean Monnet – Saint-Etienne, Thèse* 2010